

Anatomy of a Character

HOW DO YOU TELL ONE TYPEFACE FROM ANOTHER? If you're trying to distinguish Helvetica from Times Roman, the difference is obvious. In other cases, however—especially between text designs having similar characteristics—the differences can be subtle and difficult for the less experienced eye to see.

One important step in training your eye to notice the details that set one design apart from another is to examine the anatomy of the characters that make up our alphabet.

As in any profession, type designers have a specialized vocabulary to talk about the different parts of letters. You

need not commit the entire list to memory, but familiarizing yourself with this terminology will make it easier to communicate about typefaces and their characteristics. It will also help educate your eye to recognize the underlying structure of various designs and the differences among them.

Arm/leg An upper or lower (horizontal or diagonal) stroke that is attached on one end and free on the other.

Ascender The part of a lowercase character (b, d, f, h, k, l, t) that extends above the x-height.

Bar The horizontal stroke in characters such as A, H, R, e, and f.

Bowl A curved stroke which creates an enclosed space within a character (the space is then called a counter).

Cap Height The height of capital letters from the baseline to the top of caps, most accurately measured on a character with a flat bottom (E, H, I, etc.).

Counter The partially or fully enclosed space within a character.

Descender The part of a character (g, j, p, q, y, and sometimes J) that descends below the baseline.

Ear The small stroke that projects from the top of the lowercase g.

Link The stroke that connects the top and bottom part (bowl and loop) of a twostory lowercase g.

Loop The lower portion of the lowercase g.

Serif The projections extending off the main strokes of the characters of serif typefaces. Serifs come in two styles: bracketed and unbracketed. Brackets are the supportive curves which connect the serif to the stroke. Unbracketed serifs are attached sharply, and usually at 90 degree angles.

Shoulder The curved stroke of the h, m, n.

Spine The main curved stroke of the S.

Spur A small projection off a main stroke found on many capital Gs.

Stem A straight vertical stroke (or the main straight diagonal stroke in a letter which has no verticals).

Stress The direction of thickening in a curved stroke.

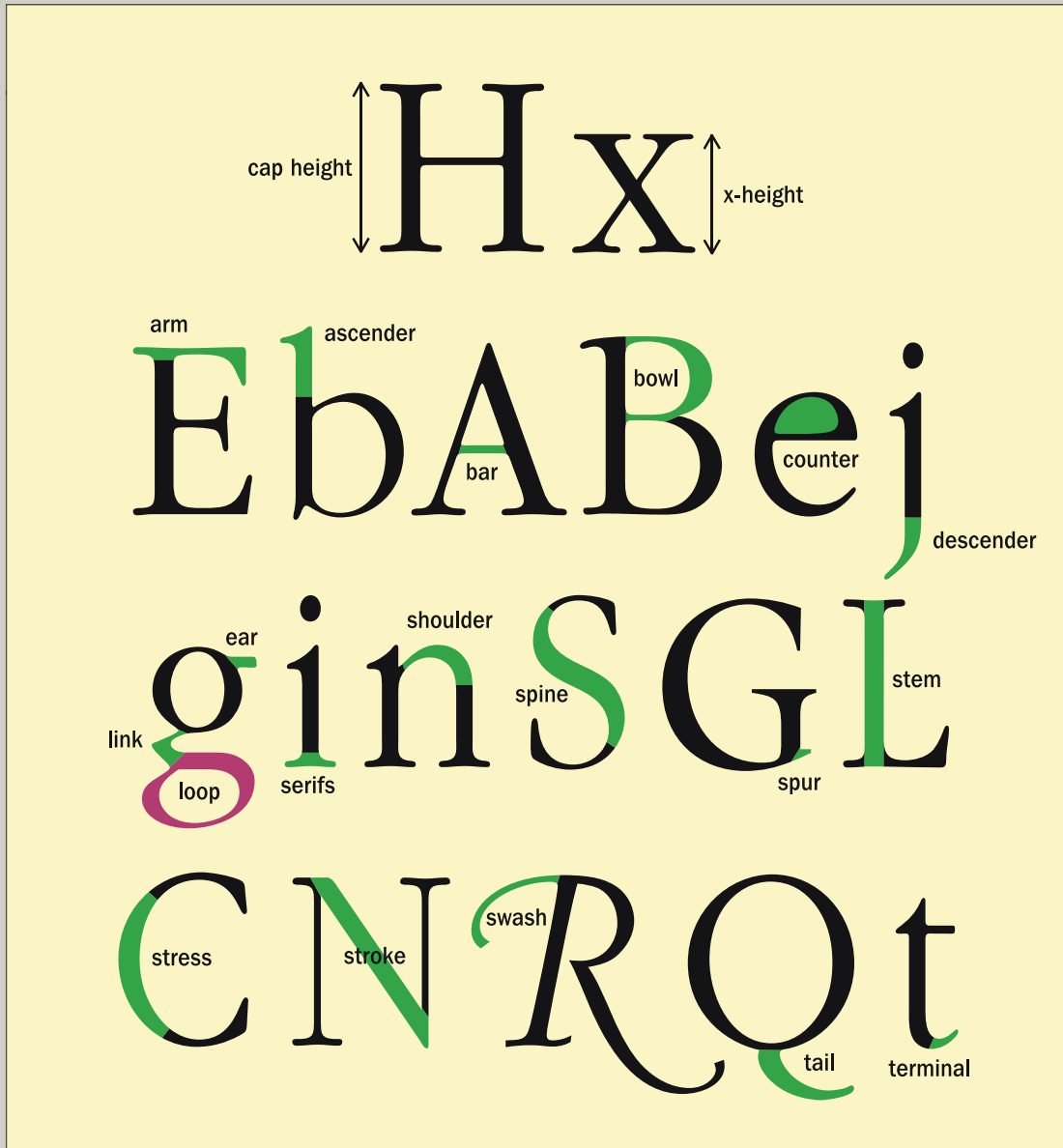
Stroke A straight or curved line.

Swash A fancy flourish replacing a terminal or serif.

Tail The descender of a Q or short diagonal stroke of an R.

Terminal The end of a stroke not terminated with a serif.

x-height The height of lowercase letters, specifically the lowercase x, not including ascenders and descenders.



Ilene Strizver, founder of The Type Studio, is a typographic consultant, designer, writer and educator specializing in all aspects of typographic communication, from the aesthetic to the technical.